

SIGN PLACEMENT ON TYPE III BARRICADES





Typical Sign Placement



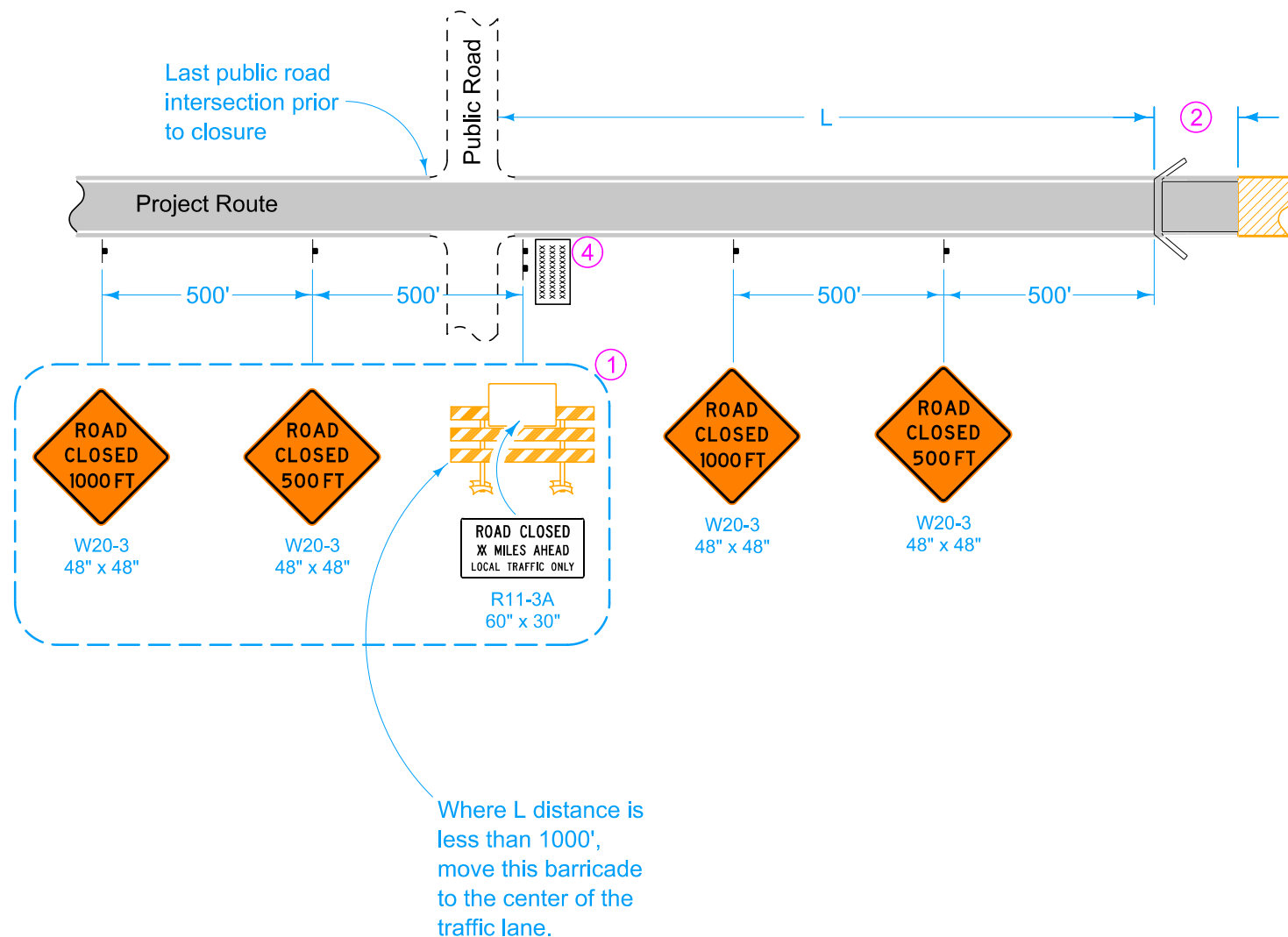
Sign Placement with Supplemental Sign

Possible Contract Items:
Traffic Control
Safety Closures
Portable Dynamic Message Sign

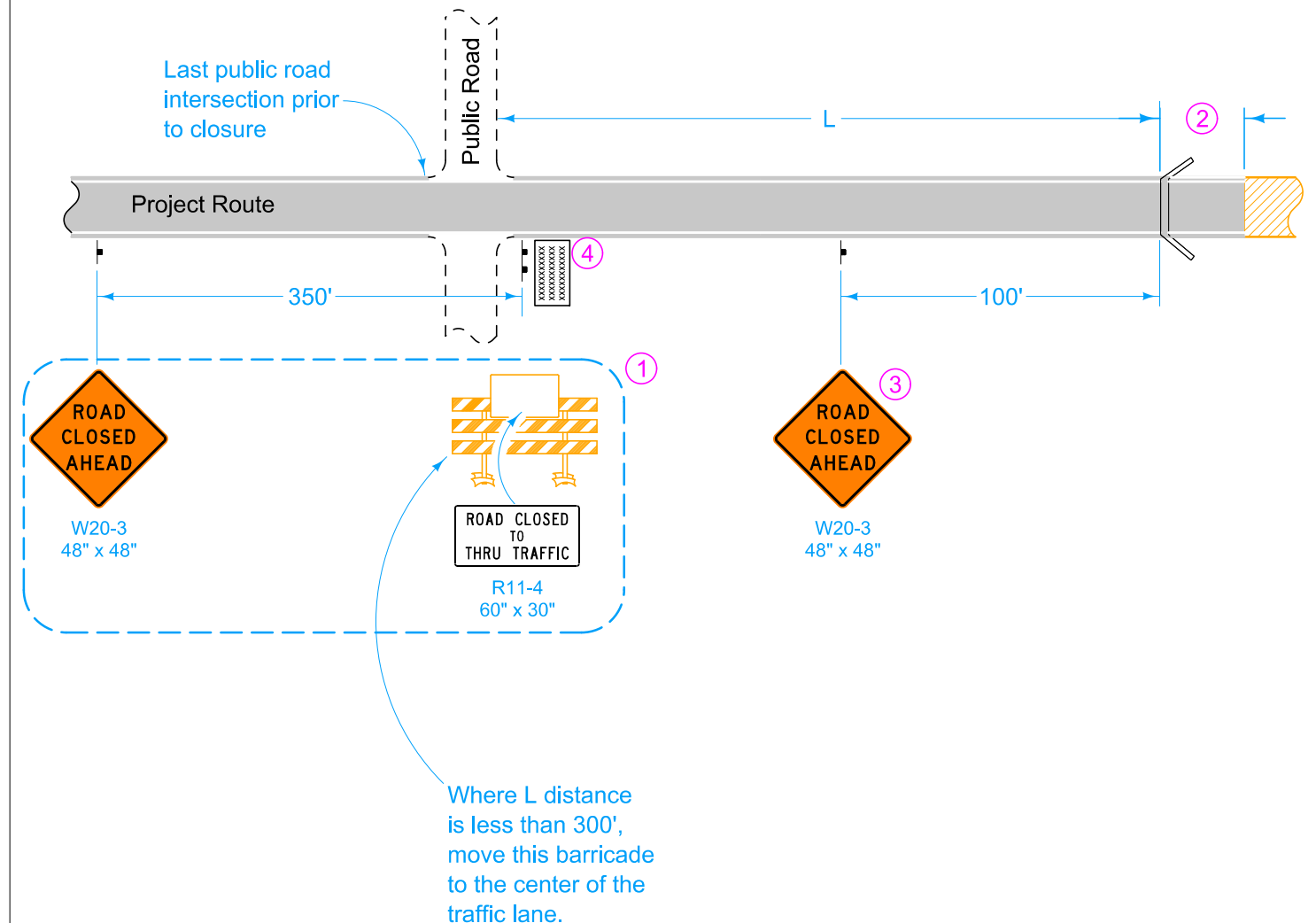
Possible Tabulation:
108-13A

 IOWA DOT		REVISION	
		7	10-21-25
STANDARD ROAD PLAN		TC-252	
		SHEET 1 of 4	
REVISIONS: Added sheet 4, closure of turn lanes.			
			
APPROVED BY DESIGN METHODS ENGINEER			
<div style="text-align: center; padding: 50px;"> ROUTES CLOSED TO TRAFFIC </div>			

SITUATION 1 (RURAL) Project Route Closure



SITUATION 1 (URBAN) Project Route Closure





LEGEND

- Traffic Sign
- Type III Barricade
- Portable Dynamic Message Sign
- Work Area
- Road Closure

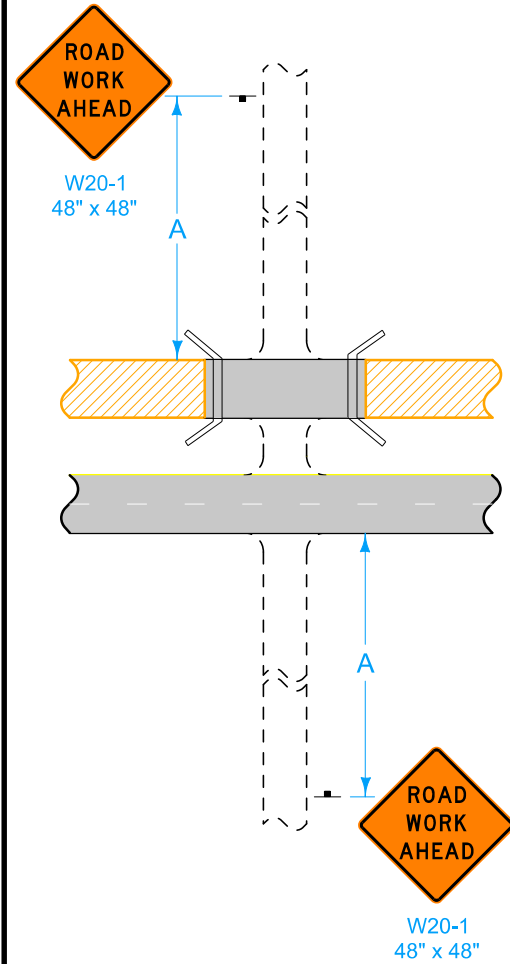
- 1 In situation 1, if the intersection is the point of detour these signs and barricade will become the responsibility of the contracting authority and may be modified by the contracting authority to fit detour signing.
- 2 When possible, a 100' buffer is desirable.
- 3 When L is less than 300 feet, omit the ROAD CLOSED AHEAD sign.

- 4 Place for 7 calendar days prior to closure. The Engineer will determine the message to display. Remove when road is closed. Use of Portable Dynamic Message Sign is optional on non-primary roadways.

 IOWA DOT		REVISION	
		7	10-21-25
STANDARD ROAD PLAN		TC-252	
		SHEET 2 of 4	
REVISIONS: Added sheet 4, closure of turn lanes.			
			
APPROVED BY DESIGN METHODS ENGINEER			
ROUTES CLOSED TO TRAFFIC			

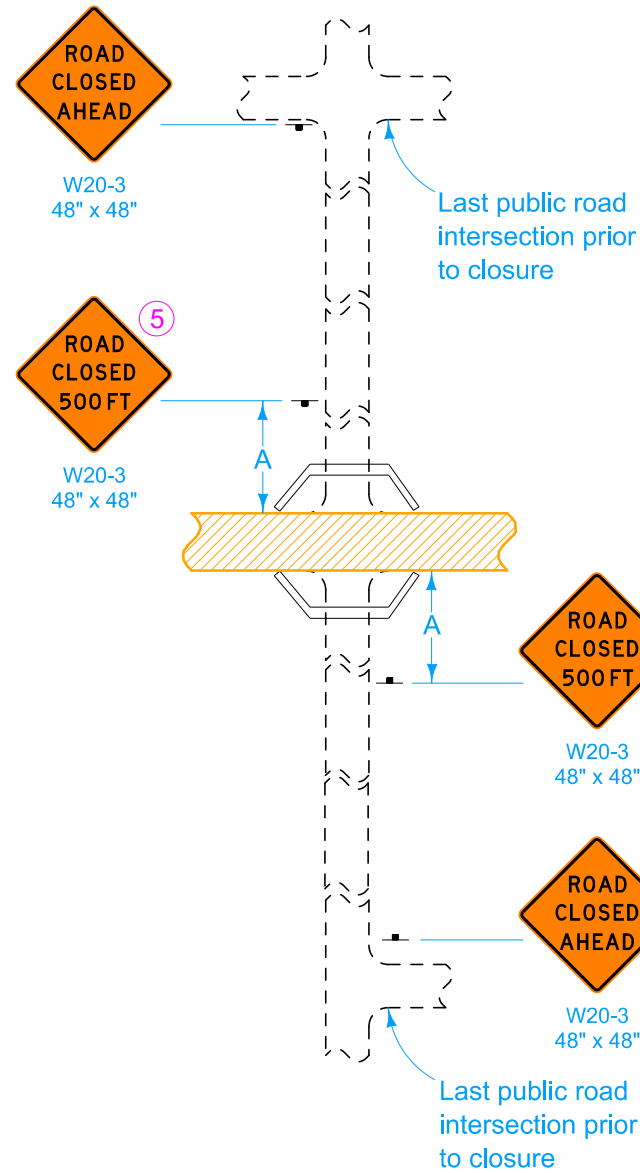
SITUATION 2

Public cross-traffic maintained.
No access to project.



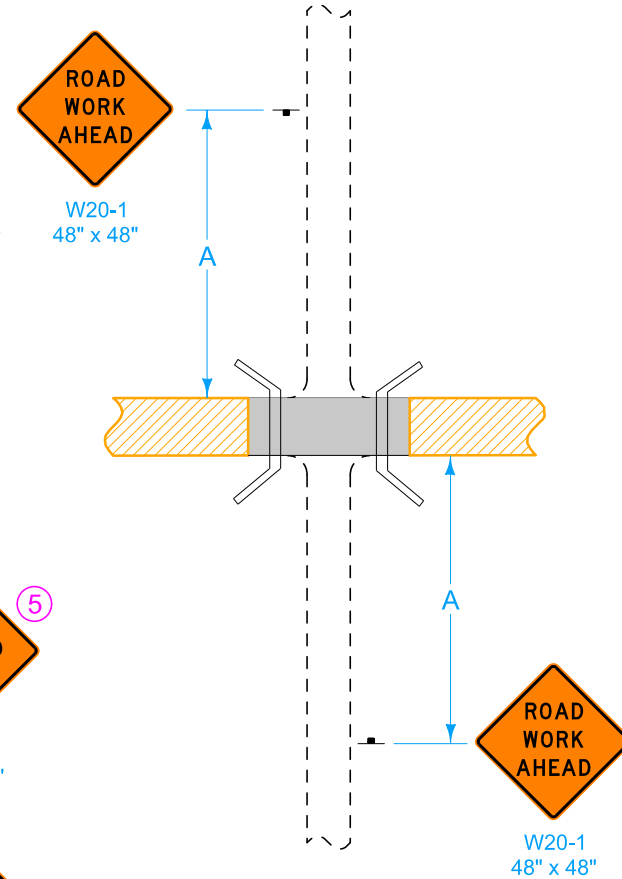
SITUATION 3

No access to project
(Applicable to T-intersections)



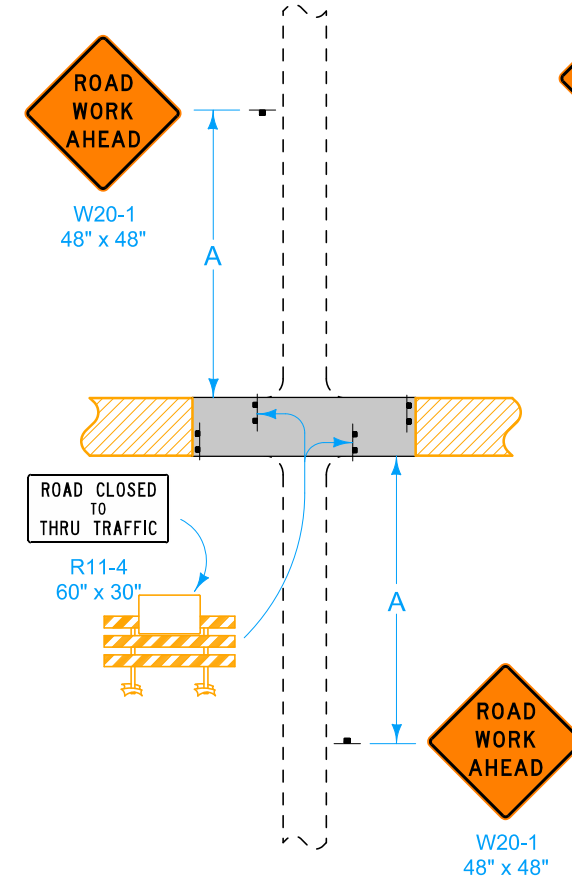
SITUATION 4

Public cross-traffic maintained.
No access to project.



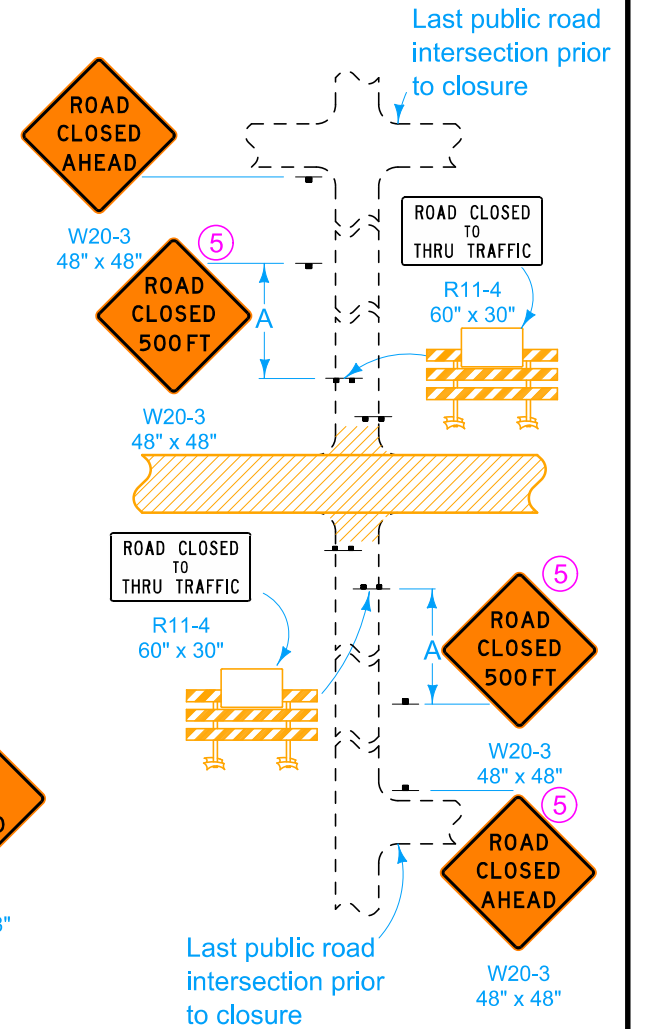
SITUATION 5

Public cross-traffic maintained.
Contractor and resident access.



SITUATION 6

No public access. Contractor and resident access only.
(Applicable to T-intersections)



LEGEND

- Traffic Sign
- Type III Barricade
- Work Area
- Road Closure

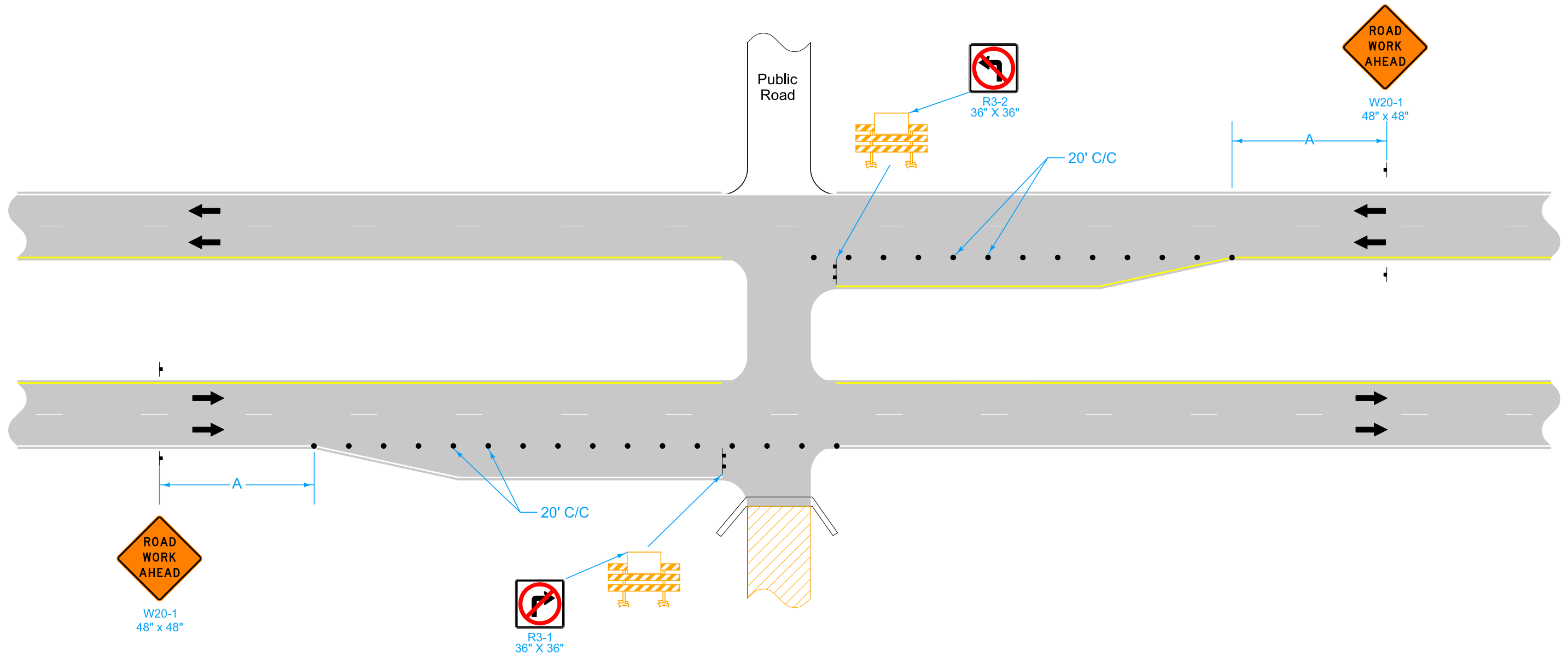
Location	A
Urban	200'
Rural	500'

During suspension of work, (such as over winter):

- Use Situation 2 on two-lane to four-lane projects.
- Situation 5 is preferred where cross-traffic is maintained.

- (5) When the distance between the last public road intersection and the ROAD CLOSED or ROAD CLOSED TO THRU TRAFFIC barricade is less than 1,000 feet, omit the ROAD CLOSED 500 FT sign.

IOWA DOT STANDARD ROAD PLAN	REVISION	
	7	10-21-25
REVISIONS: Added sheet 4, closure of turn lanes.		TC-252 SHEET 3 of 4
APPROVED BY DESIGN METHODS ENGINEER		
ROUTES CLOSED TO TRAFFIC		



LEGEND

42" Channelizer

Traffic Sign

Type III Barricade

Work Area

Road Closure

IOWA | DOT

STANDARD ROAD PLAN

REVISIONS: Added sheet 4, closure of turn lanes.

APPROVED BY DESIGN METHODS ENGINEER

ROUTES CLOSED TO TRAFFIC

REVISION

7

10-21-25

TC-252

SHEET 4 of 4